



Hostility

1 Look carefully at the picture on pages 52 to 53 of the EMOTIONARY and answer the questions.

● How do you think the cat feels? Tick the correct answer.

He's afraid of the bees.

He's angry with the bees.

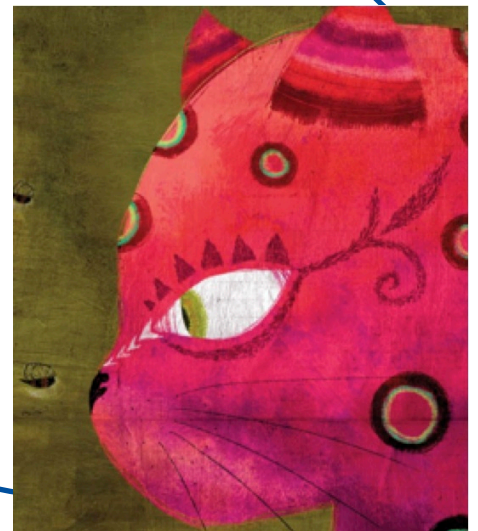
He's curious about the bees.

● What do you think is going to happen next?

Sample answer: The cat will probably attack the bees.

2 Write what you think the cat might be thinking.

Sample answer: Get out of my way!
You're annoying me!



3 Read the text about **hostility** on page 52 of the EMOTIONARY and complete the sentences.

- We feel hostile when someone stops us from **doing what we want to do**.
- When we feel hostile, we tend to **disagree with everything we hear**.
- Hostility leads us to **reject others**.

4 Write down two ways in which we show **hostility**.

Sample answer: We disagree with everything someone else says and we reject others.

5 To **disagree** is the opposite of 'to agree'. Underline the words which form their negatives by adding the prefix **dis-**. Then write the **dis-** words below.

belief

contented

wrap

obedient

happy

like

order

acceptable

infect

normal

disbelief

discontented

disobedient

dislike

disorder

disinfect

6 Write three sentences that **disagree** with the three below.

- Fish is delicious.

Fish is disgusting!

- The best time to be at the beach is in the afternoon.

The best time to be at the beach is in the morning.

- Cycling is healthy and fun.

Cycling is really dangerous and boring!

7 Match each verb to its meaning.

- reject ~~to make someone unhappy or worried~~
- attack ~~to push away (physically or with words)~~
- upset ~~to criticise someone in an aggressive way~~

8 Write down two examples of when you have acted in a hostile way towards someone.

Open answer

- Why did you act like that?

Open answer

9 Write down three examples of when someone has disagreed with you.

Open answer

● Did you feel hostile on any of these occasions?

Open answer

10 Read the following situation and imagine two different endings: in one, Oscar reacts in a hostile way and, in the other, he doesn't.

Oscar's best friend is Elliot. This week Elliot's cousin, Ben, is staying at his house. Ben is a year older than Oscar and Elliot, and gets on really well with his cousin. When Oscar meets Ben...

Hostile reaction

Oscar tries to make Elliot play with him rather than his cousin, Ben.

Non-hostile reaction

Oscar, Elliot and Ben look for things they can do together that they all enjoy.

11

Write down three things that the cat in the picture on pages 52 to 53 of the EMOTIONARY might say to show his **hostility**.

Sample answers: Get out of my way!

You're disgusting insects!

You're really making me angry!

12

What do you think might happen after that? Write your answer and draw a picture.

Sample answer: The cat might then try to scare the bees away, or the bees might try to sting the cat.



